

**Documentation Guide  
for  
PAN1026 / Toshiba TC35661**

**Version 2.0**

## Document History

Version	Date	Author	Note
<b>v1.0</b>	<b>22-04-2014</b>	<b>ARE</b>	<b>Initial version</b>
<b>V1.1</b>	<b>22-08-2014</b>	<b>TH</b>	<b>Extended Introduction</b> <b>Include information about High Level API package and related documentation</b> <b>Added document name about configuration files for -501 (patches)</b> <b>Added document list about deep sleep mode use and power calculation for SPP and BLE mode</b> <b>Updated document name for TC35661 Hardware</b>
<b>V2.0</b>	<b>28-11-2014</b>	<b>ARE</b>	<b>Documents for SW v2.0 included</b>

## Content

1. Acronyms, Definitions and References .....	4
2. Introduction .....	5
3. Available Documents .....	6
4. Command-Set Documents .....	8
4.1. Command Naming Convention .....	8
4.1.1. HCI Extension Commands .....	9
4.1.2. TCU Commands .....	10
4.2. Locating Command Description .....	11
4.2.1. Example: Locating HCI Commands .....	11
4.2.2. Example: Locating TCU Commands .....	12
5. Message Sequence Chart Documents .....	13
6. DataSheet .....	14
7. Software Documentation for High Level API .....	14
8. TC35661-501 Application Notes .....	16
9. Disclaimer .....	17

# 1. Acronyms, Definitions and References

## Acronyms

API	Application Programming Interface
BT	Bluetooth
SPP	Serial Port Profile
MNG	Bluetooth Basic Management
CPU	Central Processing Unit
HCI	Host Controller Interface
UART	Universal Asynchronous Receiver Transmitter
HOST MCU	Host MCU device
Chiron	TC35661 Bluetooth HCI LSI
BLE	Bluetooth Low-Energy.
LE	Low-Energy
GATT	Generic Attribute Protocol
BLE	Indicates an Bluetooth Low-Energy Device

## 2. Introduction

Along with TC35661-501 product, Toshiba provides a rich set of documents covering different topics, which might be relevant from a developer's perspective. This guide should help user find its way through the available documentation.

Notes:

- a) It must be noted that TC35661-501 has an embedded and BQB qualified Bluetooth Stack V4.0, that can be used with HCI and extended HCI commands over UART. HCI standard commands are common to BT SIG specifications and not documented by Toshiba. Extended HCI commands are specific to Bluetooth LSIs and are documented by Toshiba. The format of HCI commands is explained in Chapter 4.1.1.
- b) In addition TC35661-501 has > 300 embedded TCU commands, available over UART interface, that can be used to control nearly every bit and piece of the device. These TCU commands are is a mid-level Toshiba original API on top of the embedded stack, SPP classic profile and BLE GATT profile. Related documentation are shown in Table 1. The format of TCU commands is explained in Chapter 4.1.2. Flow Charts (called Message Sequence Charts) are described in Chapter 5.
- c) Finally there is a High level abstracted Toshiba Bluetooth API, that is used on an external host controller to control the Bluetooth device and communication and simplifies the use of the device greatly. Toshiba offers a Bluetooth Application Package as API driver software, including reference profiles and demo applications. These can easily be ported to various host controllers, OS or OS-less configurations. Related documentation are shown in Table 2.

### 3. Available Documents

The following table lists documents describing TC35661-501 product, associated command set and different application scenarios.

**Table 1. TC35661-501 Documentation**

Nr.	Document	Desc.
<b>Command Set Documents</b>		
1	<i>TC35661APL_ROM501_Extension_HCI_E_18thSept2013</i>	Extended Host Controller Interface command set.
2	<i>TC35661APL_ROM501_MNG_E_26thJuly2013_1</i>	Device Management command set.
3	<i>TC35661APL_ROM501_LE_MNG_E_20thNovember2013</i>	Low-Energy Management command set.
4	<i>TC35661APL_ROM501_GATT_E_20thNovember2013</i>	GATT command set.
5	<i>TC35661APL_ROM501_SDB_E_26thJuly2013</i>	Service Database command set.
6	<i>TC35661APL_ROM501_SMP_SDS_E_21stAugust2013</i>	Security Manager Protocol command set.
7	<i>TC35661APL_ROM501_VEN_E_12ndDecember2013</i>	Vendor Specific command set
8	<i>TC35661APL_ROM501_SPP_E_24thJune2013</i>	Serial Port Profile command set.
<b>Application Notes</b>		
9	<i>TC35661APL_ROM501_SPP_LE_Application_Note_E_19thDec2013</i>	Generall stuff about dual-mode operation.
10	<i>TC35661APL_Deep_Sleep_Function_July_2014</i>	Bluetooth LSI Sleep modes and use
10a	<i>TC35661-501 Sleep Current Calculator_July_2014</i>	Power estimator for Bluetooth Classic and BLE mode
11	<i>TC35661-501 Configuration Application Note V1.0</i>	Software patches for -501 firmware
12	<i>Simultaneous Operation of SPP and BLE App Note_v1.1</i>	Simultaneous operation of SPP classic & Bluetooth low energy.
<b>Message Sequence Charts</b>		
13	<i>TC35661APL_ROM501_SMP_MSC_E_3rdOctober2013</i>	Security Manager Protocol msg. Seq. charts.

14	TC35661APL_ROM501_SPP_MSC_E_24thJune2013	SPP classic message sequence chart.
15	TC35661APL_ROM501_LE_MSC_E_20thNovember2013	Bluetooth low-energy message sequence chart.
16	TC35661APL_ROM501_MNG_MSC_E_24thJune2013	BT Management sequence charts.
<b>Datasheet</b>		
17	TC35661SBG-501_E_rev100_Oct_2013_Overview_Specification	List of supported features.
18	TC35661SBG-501_E_rev1.14_Jul_2014_Hardware_Specification	Hardware Specification document.

The following table contains documents describing Software delivered along with Bluetooth TC35561-501 LSI.

**Table 2. Software Documentation for TC35661-501 for Abstracted High Level API**

Nr.	Document	Desc.
<b>SW API Specifications</b>		
1	api_help.chm	Dual-Mode SPP+BLE API documentation
<b>SW Application Notes</b>		
2	software_integration_guide.pdf	Explains how to integrate SW v2.0 to your environment.
3	bt_classic_usage_guide.pdf	Shows how to use SPP API in the most efficient way.
4	bt_le_profile_development_guide	Illustrates the process of a BLE profile implementation using BLE API.
<b>BLE Profile Documents</b>		
5	blood_pressure_profile.pdf	BP Profile usage guide
6	health_thermometer_profile.pdf	HT Profile usage guide
7	heart_rate_profile.pdf	HR Profile usage guide
8	find_me.pdf	FM Profile usage guide
9	proximity_profile.pdf	PX Profile usage guide
10	spp_over_ble_profile.pdf	SPPoverBLE Profile usage guide

## 4. Command-Set Documents

The command set of TC35661-501 is described in 8 individual documents (see Table1.), whereby each document describes a particular group of commands. The following table lists all command groups.

**Table 3. Command Groups**

<b>Command Group</b>	<b>Description</b>
<b>Extension_HCI</b>	Toshiba extended set of HCI commands.
<b>MNG</b>	General LSI management commands.
<b>LE_MNG</b>	Bluetooth low-energy management commands.
<b>LE_GATT</b>	General GATT commands.
<b>LE_GATT_SDB</b>	GATT Server Database commands.
<b>LE_SMP_SDS</b>	Security manager protocol command set.
<b>VEN</b>	Vendor (Toshiba) specific commands.
<b>SPP</b>	SPP classic (Serial Port Profile) commands

### 4.1. *Command Naming Convention*

There are two types of TC35661-501 commands:

1. **HCI Extension**<sup>1</sup> commands (Host Controller Interface level commands)
2. **TCU** commands (Higher-level commands)

Depending on operation mode used, you will either need to use HCI or TCU commands. Please note that both of them have their own naming convention.

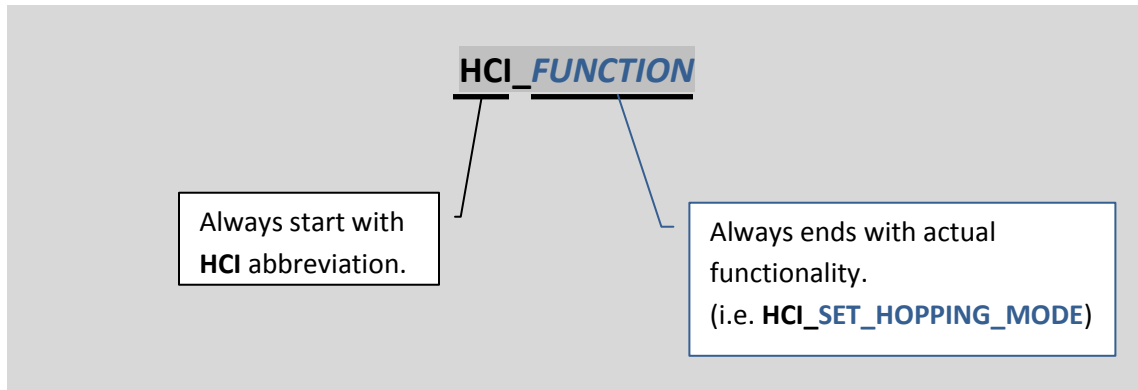
---

<sup>1</sup> HCI Extension commands are commands defined by Toshiba. These commands are an addition to the standard set of HCI commands defined by Bluetooth SIG.



#### 4.1.1. HCI Extension Commands

HCI Extension commands described in the documentation all follow the same naming convention:

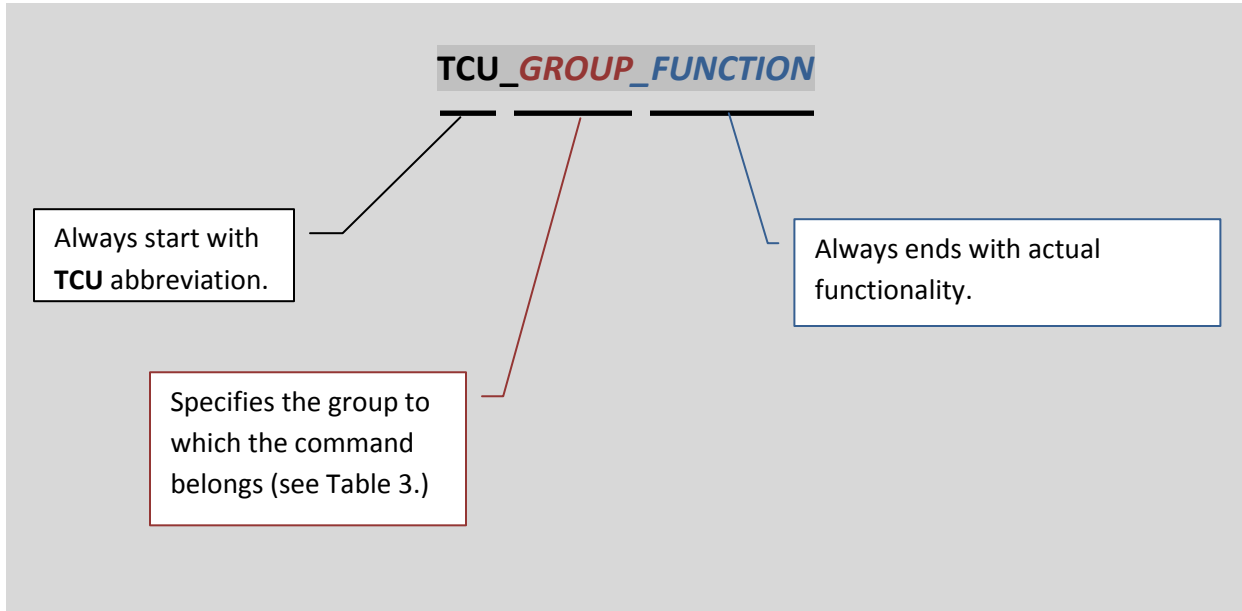


Please note that **Extension HCI** document, as its name says, lists Toshiba defined HCI extension commands only.

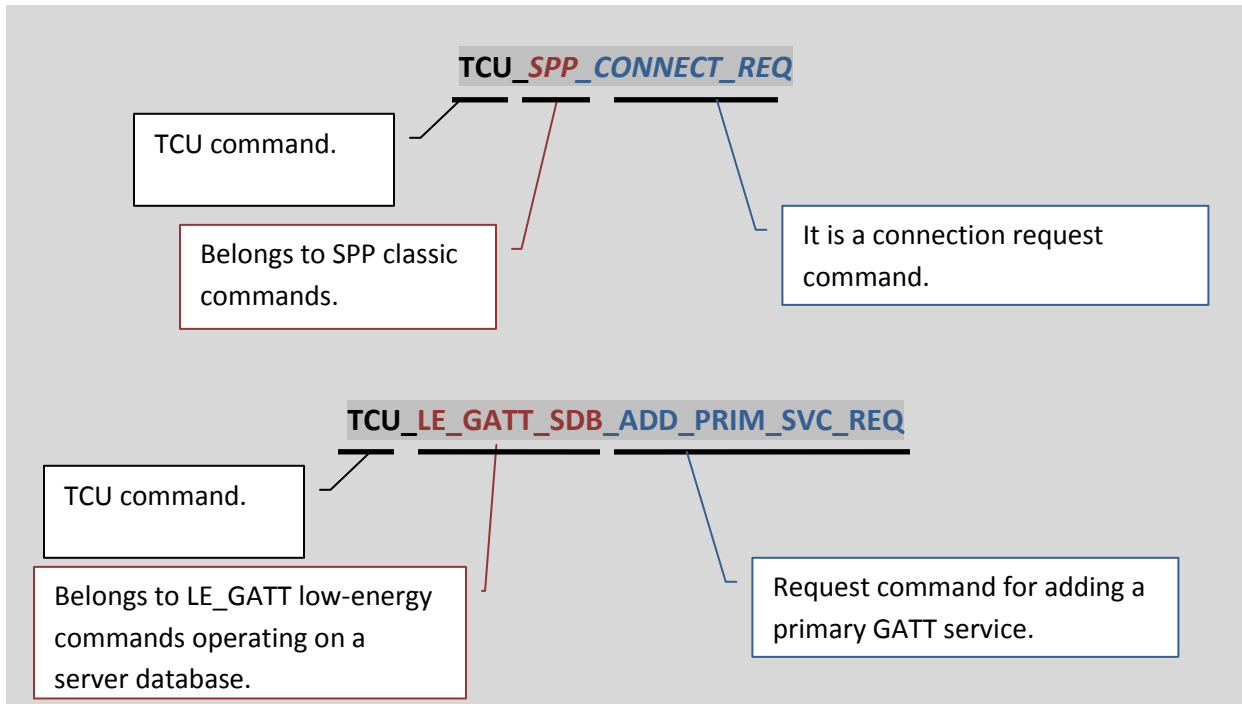
The description of a standard HCI command set, as defined by Bluetooth SIG, can be found in: **Bluetooth 4.0 Core Specification Vol. 2 -> Part E -> "Host Controller Interface functional specification" -> 7. HCI COMMANDS AND EVENTS.**

### 4.1.2. TCU Commands

As it is the case with HCI extension commands, TCU commands also follow their own naming convention:



#### Examples:



## 4.2. Locating Command Description

The first thing you need to do is to find out what type of the command it is (HCI or TCU). All HCI commands, as stated before, start with **HCI\_...** and all TCU commands with **TCU\_...**. Once you know of which type your command is and in case of TCU commands to which group it belongs, you can use following table to locate the document that describes it.

Table 4 Command-document mapping

Command Type	Command Group	Document
HCI	-	- <b>Extension HCI:</b> TC35661APL_ROM501_Extension_HCI_E_18thSept2013 - <b>Standard HCI:</b> Bluetooth 4.0 Core specification.
TCU	<b>MNG</b>	TC35661APL_ROM501_MNG_E_26thJuly2013_1
	<b>LE_MNG</b>	TC35661APL_ROM501_LE_MNG_E_20thNovember2013
	<b>LE_GATT</b>	TC35661APL_ROM501_GATT_E_20thNovember2013
	<b>LE_GATT_SDB</b>	TC35661APL_ROM501_SDB_E_26thJuly2013
	<b>LE_SMP_SDS</b>	TC35661APL_ROM501_SMP_SDS_E_21stAugust2013
	<b>VEN</b>	TC35661APL_ROM501_VEN_E_12ndDecember2013
	<b>SPP</b>	TC35661APL_ROM501_SPP_E_24thJune2013

### 4.2.1. Example: Locating HCI Commands

1. **Extension** HCI command:

Command **HCI\_LOC\_SET\_WHITENING\_MODE** belongs to the *extended* set of HCI commands and is described in TC35661APL\_ROM501\_Extension\_HCI\_E\_18thSept2013 document.

2. **Standard** HCI command:

Command **HCI\_Reset** belongs to the *standard* HCI command set and therefore it is *not* listed in Toshiba documentation. This command can be found in **Bluetooth 4.0 Core Specification Vol. 2 -> Part E -> "Host Controller Interface functional specification" -> 7. HCI COMMANDS AND EVENTS->7.3.2. Reset Command.**

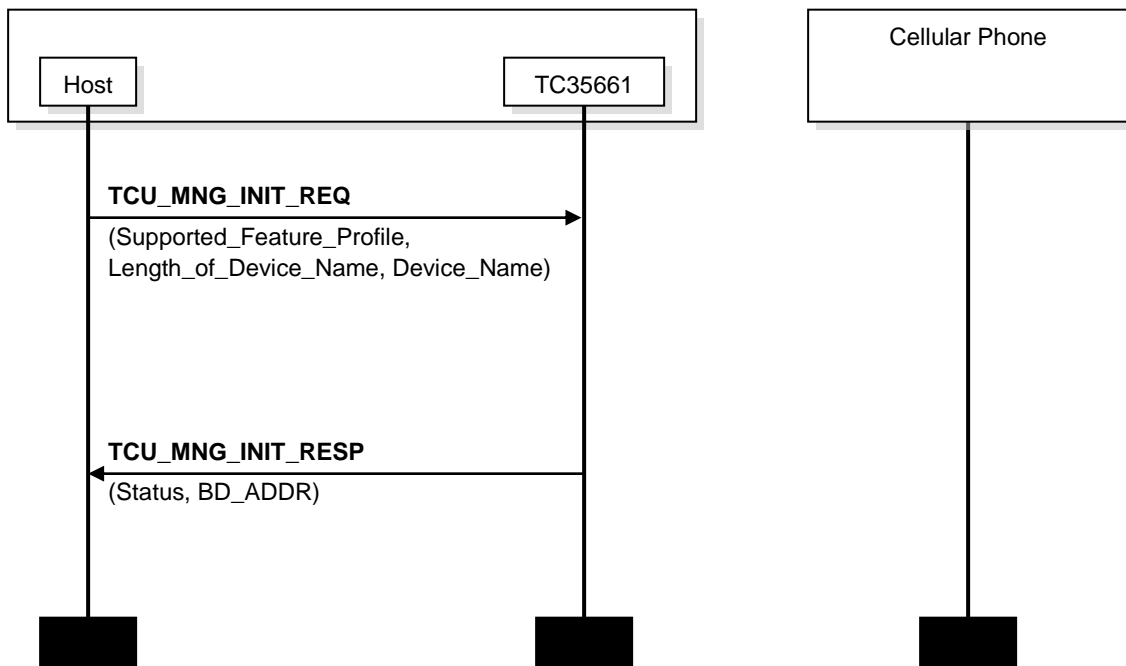
#### 4.2.2. Example: Locating TCU Commands

1. **TCU\_SPP\_CONNECT\_REQ**: Belongs to SPP command group and can be found in the *TC35661APL\_ROM501\_SPP\_E\_24thJune2013* document.
2. **TCU\_LE\_GATT\_SDB\_ADD\_PRIM\_SVC\_REQ**: Belongs to Bluetooth low-energy GATT commands operating over **Server Database**. Can be found in *TC35661APL\_ROM501\_SDB\_E\_26thJuly2013* document.
3. **TCU\_VEN\_SET\_GPIO\_WRITE\_RESP**: Belongs to Vendor specific command group and can be found in *TC35661APL\_ROM501\_VEN\_E\_12ndDecember2013* document.
4. **TCU\_MNG\_DISCOVER\_REMOTE\_DEVICE\_REQ**: Belongs to general management commands and can be found in *TC35661APL\_ROM501\_MNG\_E\_26thJuly2013\_1* document.

## 5. Message Sequence Chart Documents

In order to illustrate how different Bluetooth procedures should be carried out, Toshiba provides a set of Message Sequence Chart documents (see Table 1). These charts show the exact sequence of the TC35661-501 commands/events exchanged between Host CPU and BT chip (see Figure 1).

Figure 1 Message Sequence Chart Example



Above sequence for instance shows initialization sequence of the TC35661-501 and is described in **TC35661APL\_ROM501\_MNG\_MSC\_E\_24thJune2013** document.

## 6. DataSheet

Toshiba supplies datasheet to describe the hardware and available features of TC35661-501. Pls note that different versions of TC35661-xxx exist. They vary by embedded firmware and result in different list of supported features.

## 7. Software Documentation for High Level API

In case you are using the Bluetooth Application Software package for TC35661-501 provided by Toshiba Electronics Europe GmbH, there is a set of Software documents you can use (see Table 2).

Software documents are generally divided in following categories:

1. High-level API specifications (abstract SPP and BLE Software APIs)
2. Driver level API specifications (command encapsulation layer),
3. Application Notes (for SPP classic and Bluetooth Low-Energy).

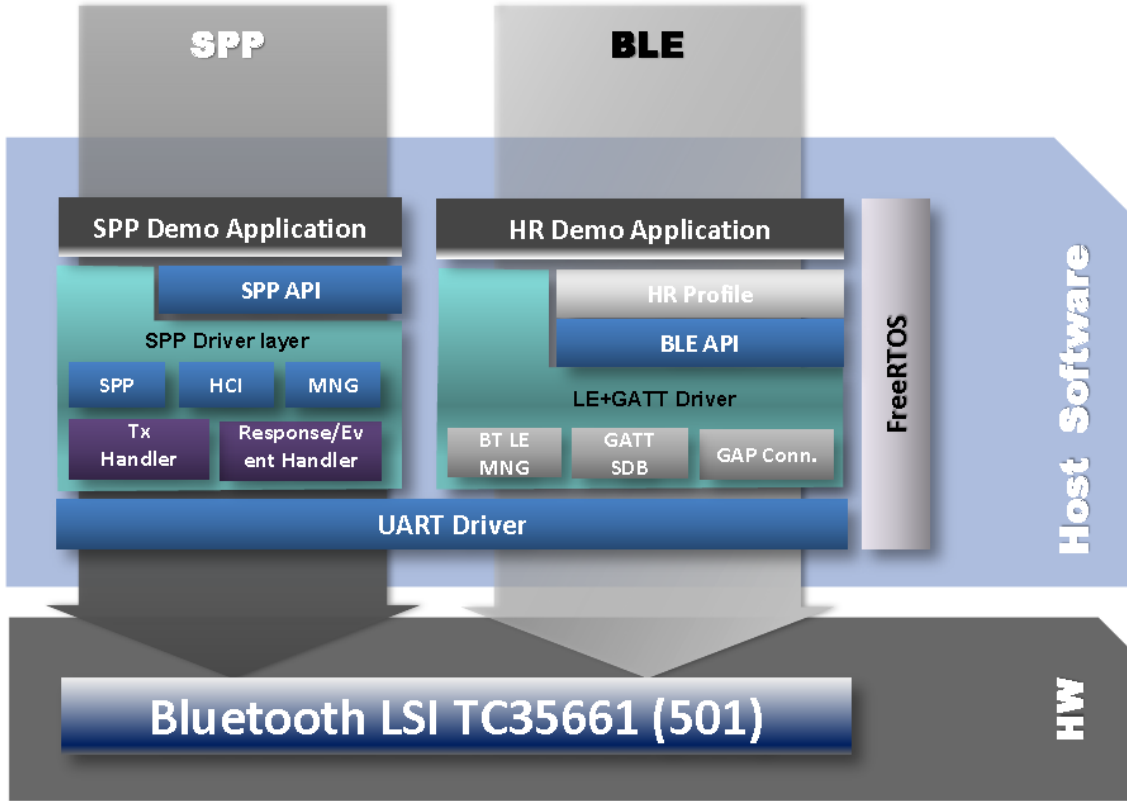
In case you would like to quickly understand how the SPP classic or Bluetooth Low-energy works, the Software application notes might be quite helpful. Example of BLE profile for Heart-Rate is included.

The architecture of the High Level API is shown below for information only (Figure 2). Pls read more details in the High Level API Software Package available on Toshiba Electronics Europe GmbH Internet.

Pls check for technical documents on this site:

<http://www.toshiba-components.com/bluetooth/index.html>

Figure 2 High Level API Software Architecture



## **8. TC35661-501 Application Notes**

Available application notes cover different application areas and scenarios (see Table 1). Currently, there are application notes for TC35661-501 illustrating different interesting topics, like HW connection between CPU and BT chip, UART data transmission, simultaneous operation of SPP and BLE, sleep mode, optimization of the RF characteristic, power down power optimization etc.

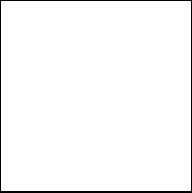
In case you are looking for such kind of information, this is the right place to search for it.



## 9. Disclaimer

### RESTRICTIONS ON PRODUCT USE

- Panasonic, and its subsidiaries and affiliates (collectively "PANASONIC"), reserve the right to make changes to the information in this document, and related hardware, software and systems (collectively "Product") without notice.
- This document and any information herein may not be reproduced without prior written permission from Panasonic. Even with Panasonic written permission, reproduction is permissible only if reproduction is without alteration/ Panasonic.
- Though Panasonic works continually to improve Product's quality and reliability, Product can malfunction or fail. Customers are responsible for complying with safety standards and for providing adequate designs and safeguards for their hardware, software and systems which minimize risk and avoid situations in which a malfunction or failure of Product could cause loss of human life, bodily injury or damage to property, including data loss or corruption. Before customers use the Product, create designs including the Product, or incorporate the Product into their own applications, customers must also refer to and comply with (a) the latest versions of all relevant Panasonic information, including without limitation, this document, the specifications, the data sheets and application notes for Product and the precautions and conditions set forth in the "Panasonic Semiconductor Reliability Handbook" and (b) the instructions for the application with which the Product will be used with or for. Customers are solely responsible for all aspects of their own product design or applications, including but not limited to (a) determining the appropriateness of the use of this Product in such design or applications; (b) evaluating and determining the applicability of any information contained in this document, or in charts, diagrams, programs, algorithms, sample application circuits, or any other referenced documents; and (c) validating all operating parameters for such designs and applications. **Panasonic ASSUMES NO LIABILITY FOR CUSTOMERS' PRODUCT DESIGN OR APPLICATIONS.**
- Product is intended for use in general electronics applications (e.g., computers, personal equipment, office equipment, measuring equipment, industrial robots and home electronics appliances) or for specific applications as expressly stated in this document. Product is neither intended nor warranted for use in equipment or systems that require extraordinarily high levels of quality and/or reliability and/or a malfunction or failure of which may cause loss of human life, bodily injury, serious property damage or serious public impact ("Unintended Use"). Unintended Use includes, without limitation, equipment used in nuclear facilities, equipment used in the aerospace industry, medical equipment, equipment used for automobiles, trains, ships and other transportation, traffic signaling equipment, equipment used to control combustions or explosions, safety devices, elevators and escalators, devices related to electric power, and equipment used in finance-related fields. Do not use Product for Unintended Use unless specifically permitted in this document.
- Do not disassemble, analyze, reverse-engineer, alter, modify, translate or copy Product, whether in whole or in part.
- Product shall not be used for or incorporated into any products or systems whose manufacture, use, or sale is prohibited under any applicable laws or regulations.
- The information contained herein is presented only as guidance for Product use. No responsibility is assumed by Panasonic for any infringement of patents or any other intellectual property rights of third parties that may result from the use of Product. No license to any intellectual property right is granted by this document, whether express or implied, by estoppel or otherwise.
- **ABSENT A WRITTEN SIGNED AGREEMENT, EXCEPT AS PROVIDED IN THE RELEVANT TERMS AND CONDITIONS OF SALE FOR PRODUCT, AND TO THE MAXIMUM EXTENT ALLOWABLE BY LAW, Panasonic (1) ASSUMES NO LIABILITY WHATSOEVER, INCLUDING WITHOUT LIMITATION, INDIRECT, CONSEQUENTIAL, SPECIAL, OR INCIDENTAL DAMAGES OR LOSS, INCLUDING WITHOUT LIMITATION, LOSS OF PROFITS, LOSS OF OPPORTUNITIES, BUSINESS INTERRUPTION AND LOSS**



**OF DATA, AND (2) DISCLAIMS ANY AND ALL EXPRESS OR IMPLIED WARRANTIES AND CONDITIONS RELATED TO SALE, USE OF PRODUCT, OR INFORMATION, INCLUDING WARRANTIES OR CONDITIONS OF MERCHANTABILITY, FITNESS FOR A PARTICULAR PURPOSE, ACCURACY OF INFORMATION, OR NONINFRINGEMENT.**

- Do not use or otherwise make available Product or related software or technology for any military purposes, including without limitation, for the design, development, use, stockpiling or manufacturing of nuclear, chemical, or biological weapons or missile technology products (mass destruction weapons). Product and related software and technology may be controlled under the Japanese Foreign Exchange and Foreign Trade Law and the U.S. Export Administration Regulations. Export and re-export of Product or related software or technology are strictly prohibited except in compliance with all applicable export laws and regulations.
- Product may include products subject to foreign exchange and foreign trade control laws.
- The technical information described in this document is subject to foreign exchange and foreign trade control laws.
- Please contact your Panasonic sales representative for details as to environmental matters such as the RoHS compatibility of Product. Please use Product in compliance with all applicable laws and regulations that regulate the inclusion or use of controlled substances, including without limitation, the EU RoHS Directive. Panasonic assumes no liability for damages or losses occurring as a result of noncompliance with applicable laws and regulations.